

UNSHIELDED SMD POWER INDUCTORS / FPI TYPE

FEATURES

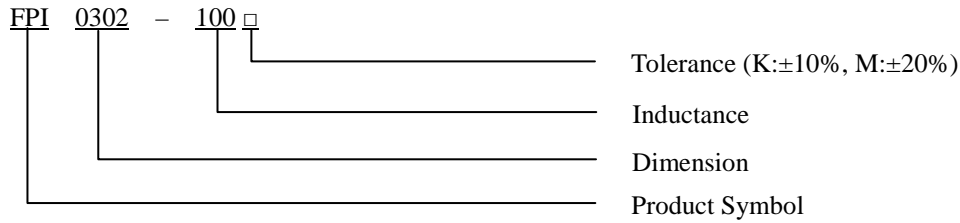
- ◆ Silver Plated Type
- ◆ High power and high saturation
- ◆ Ideal inductors for DC/DC conversion



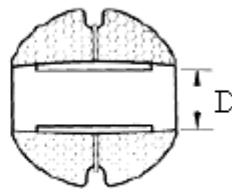
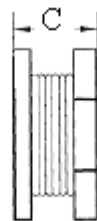
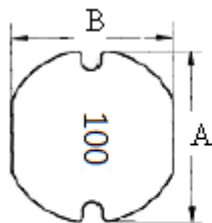
APPLICATIONS

- ◆ Power supply for VTRs.
- ◆ Portable communication equipment.
- ◆ Notebook PCs.
- ◆ LCD televisions.
- ◆ DC/DC converters, etc.

ORDERING CODE



DIMENSIONS (UNIT: mm)



A	3.3 ± 0.3	m/m
B	3.0 ± 0.3	m/m
C	2.1 ± 0.3	m/m
D	1.0 (REF)	m/m

CORE MASTER ENTERPRISE CO., LTD.

<http://www.coremaster.com.tw>



UNSHIELDED SMD POWER INDUCTORS / FPI TYPE

ELECTRICAL CHARACTERISTICS FOR FPI0302

Part No.	Inductance (uH)	RDC (Ω)	IDC (A)
FPI0302-1R0 □	1.0	0.054	4.00
FPI0302-2R2 □	2.2	0.120	2.50
FPI0302-3R3 □	3.3	0.160	2.30
FPI0302-4R7 □	4.7	0.200	2.20
FPI0302-5R6 □	5.6	0.210	1.70
FPI0302-6R8 □	6.8	0.350	1.50
FPI0302-8R2 □	8.2	0.290	1.45
FPI0302-100 □	10	0.360	1.40
FPI0302-120 □	12	0.387	1.20
FPI0302-150 □	15	0.450	1.13
FPI0302-180 □	18	0.490	0.90
FPI0302-220 □	22	0.600	0.85
FPI0302-270 □	27	0.750	0.80
FPI0302-330 □	33	1.550	0.75
FPI0302-390 □	39	2.150	0.70
FPI0302-470 □	47	2.300	0.65
FPI0302-560 □	56	2.450	0.60
FPI0302-680 □	68	2.500	0.50
FPI0302-820 □	82	2.700	0.40
FPI0302-101 □	100	3.000	0.35
FPI0302-121 □	120	3.200	0.30
FPI0302-151 □	150	3.600	0.28
FPI0302-181 □	180	5.780	0.26
FPI0302-221 □	220	7.000	0.25
FPI0302-271 □	270	7.580	0.24
FPI0302-331 □	330	8.450	0.23
FPI0302-391 □	390	9.480	0.22
FPI0302-471 □	470	10.800	0.21
FPI0302-561 □	560	17.000	0.12
FPI0302-102 □	1000	34.500	0.11

* 100uH 以上 Test Frequency : 1KHZ/1V

* 100uH 以下 Test Frequency : 2.52MHZ/1V

CORE MASTER ENTERPRISE CO., LTD.



<http://www.coremaster.com.tw>